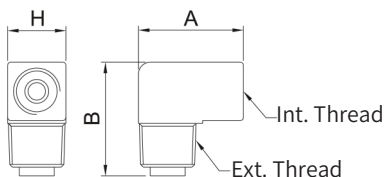
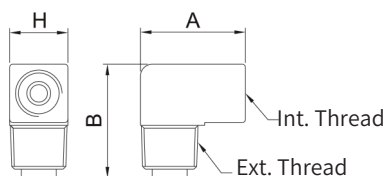


One-way Elbow



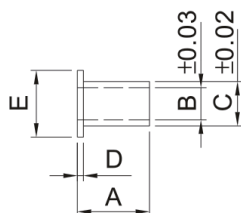
Model	Diameter	d	A	B	H	Int. thread	Ext. thread	N.W(g)
PH-4011	Φ4	Φ2.2	18	19.5	10	M8xP1.0	PT1/8	11
PH-6011	Φ6	Φ2.2	20	21.5	12	M10xP1.0	PT1/8	14

Reverse Elbow



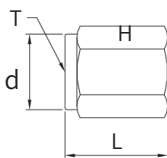
Model	Diameter	d	A	B	H	Int. thread	Ext. thread	N.W(g)
PH-4012	Φ4	Φ2.2	18	19.5	10	M8xP1.0	PT1/8	11
PH-6012	Φ6	Φ2.2	20	21.5	12	M10xP1.0	PT1/8	14

Tube Insert



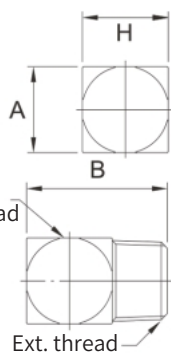
Model	Tube Outer dia	A	B	C	D	E
PI-425	Φ4	10	Φ1.7	Φ2.5	0.5	Φ4
PI-64	Φ6	13	Φ3.4	Φ4.0	0.6	Φ6
PI-86	Φ8	13	Φ4.9	Φ6.0	0.6	Φ8
PI-108	Φ10	15	Φ5.9	Φ7.9	0.6	Φ10

Compression Nut



Model	Diameter	d	L	T	H	N.W(g)
PR-4	Φ4	Φ4.05	13	M8xP1.0	10	3
PR-6	Φ6	Φ6.05	13.5	M10xP1.0	12	5

Plane Elbow



Model	A	B	Int. thread	Ext. thread	H	N.W(g)
PF-4061	12	20	M8xP1.0	M6xP1.0	12	14
PF-408	12.7	21	M8xP1.0	M8xP1.0	12.7	12
PF-410	12.7	21	M8xP1.0	M10xP1.0	12.7	13
PF-401	12.7	21	M8xP1.0	PT1/8	12.7	13
PF-610	12	20	M10xP1.0	M10xP1.0	12	10
PF-601	12.7	21	M10xP1.0	PT1/8	12.7	13
PF-101	12	20	PT1/8	PT1/8	12	10