

ZVB Dual Line Distributor (40MPa)

The ZVB dual wire distributor is suitable for 40MPa grease or oil dual wire lubrication systems. The distributor can be installed with three options: Metering screw, Adjusting device, and Motion indicator.

1. For ZVB with Metering shrews, the Metered volume cannot be adjusted. Only by selecting different index Metering shrews can the Metered volume be changed.
2. ZVB with Adjusting device, Metered volume can be adjusted from zero to rated range, and can judge whether distributor is working properly by observing the Adjusting device.
3. ZVB with motion indicator can adjust the metered volume within the range of zero to rated range, and can control the metered volume by sending a signal through the monitoring switch. Each distributor can only come with one adjustment device.



Specification

Model	Output(mL/cyc)	P. (MPa)	Starting P.	Piston output	Outlets	Assembled devices
ZVB※※05	0.5	40	≤1 MPa	0.3mL	1~8	Metering screw, Movement indicator
ZVB※※15	1.5				1~8	All three
ZVB※※30	3.0				1~4	Movement indicator

When number of outlets is singular, one outlet has an output that is twice the rated value.

Applicable grease: NLGI 0 #~3 #, or lubricating oil > N68. The working environment temperature is -20 °C~80 °C.

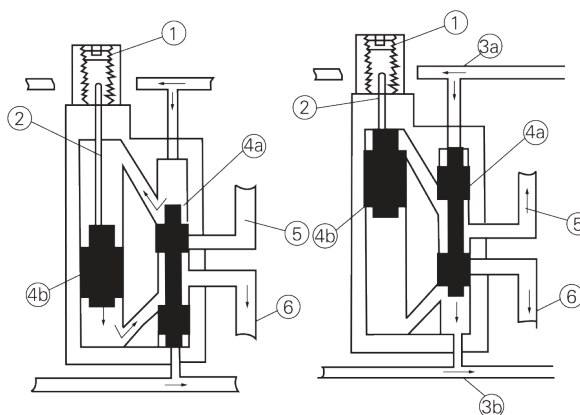
Order Code

ZVB A 4 15 S 1

- 1 = with welded plate, 0 = Without welded plate
- S = Metering screw
- M = Movement indicator adjustment
- L = Movement indicator adjustment + Travel switch
- 05 = 0.5mL/cyc, 15 = 1.5mL/cyc, 30 = 3.0mL/cyc
- Number of outlets 1 ~ 8
- A = Cast iron plating, E = 304 stainless steel

Instructions

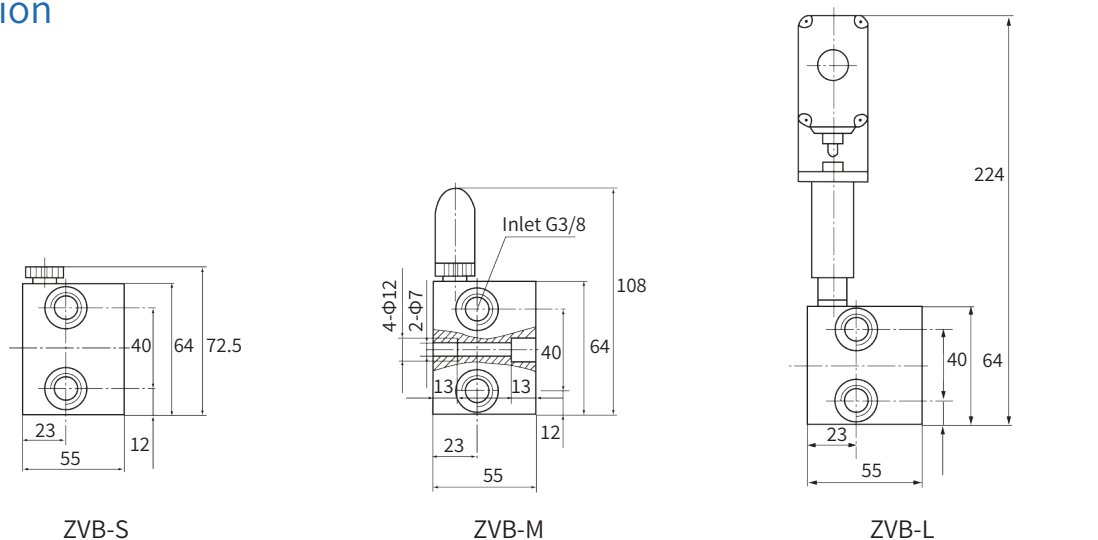
1. Metering screw
2. Indicator rod
- 3a and 3b oil supply pipes
- 4a. Control piston
- 4b. Working piston
5. Upper oil supply pipe
6. Lower feed pipe



There is a control piston and a working piston in the piston holes connected to each two lubrication points of ZVB. The two inlets are respectively connected to two oil supply pipes 3a and 3b. When one of the oil supply pipes is pressurized, the other is unloaded.

As shown in the above figure, the grease conveyed by the pump enters the upper end of the distributor control piston through the oil supply pipe 3a. The control piston first moves downwards (at this time, the grease squeezed from the lower end of the control piston enters the unloading oil supply pipe 3b), connecting the upper chamber of the working piston with the upper chamber of the control piston, and then the working piston moves downwards. At this time, the grease squeezed by the working piston is pressed through the annular groove of the control piston to outlet 6 to the lubrication point, Complete the discharge action of the first cycle. Switch to line 3b to start the second cycle of discharge action, and the distributor piston will perform the aforementioned action in reverse in the same order, with outlet 5 discharged.

Dimension

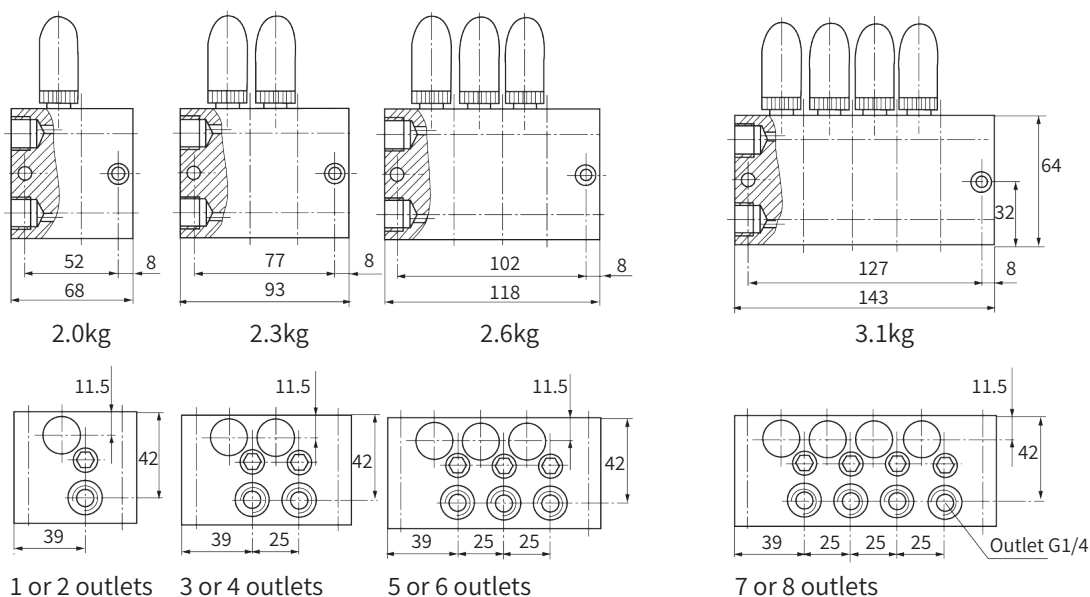


ZVB-S

ZVB-M

ZVB-L

Taking ZVB with 1-2 outlets as an example, dimensions with different devices



Taking ZVB with adjusting device as an example, dimensions of different outlet numbers

Instructions

1. When used in dusty, humid and harsh environment, it should be equipped with protective cover.
2. The parallel installation method is preferred in the dual-wire system. Secondly, the series installation method is adopted, and the two G3/8 plugs at the inlet on one side must be removed. The maximum number of serial connections is not allowed to exceed two, and can be installed in parallel and series if necessary.
3. The ZVB-S, Metered volume with Metering screw can not be adjusted, only the Metering screw with different index can be selected to change the Metering screw.
4. For the ZVB-M with Adjusting device, the adjustment of the Metered volume should rotate the adjusting screw of the limiter when the rod is retracted.
5. For ZVB-L with motion indicator, adjustment of Metered volume should be carried out when indicator lever is retracted.
6. If the number of outlets needs to be odd, remove the screws between the corresponding outlets and block the outlet that is not in use with G1/4 "plugs. The upper and lower outlets are connected, and both the forward and reverse movements of the piston are discharged from this outlet.
7. For ease of disassembly, it is best to bend the pipeline from ZVB to lubrication points at a 90 ° angle or use a sleeve joint.
8. The installation surface of the distributor should be smooth and flat, and the installation bolts should not be tightened too tightly to avoid deformation and affecting normal operation during use.
9. It is recommended to use GB70-85 screws M60 x 50 for installation and fixation of ZVB-S and ZVB-M. A 30mm base plate should be provided between the installation surfaces of ZVB-L, and GB70-85 special screws M6 x 85 should be used for installation and fixation.

Troubleshooting

1. Distributor does not operate.

Check if the oil pipe is conveying pressure oil, if the lubrication points are blocked, if the oil supply pipe is flattened, and if impurities enter the distributor, causing the piston hole to become rough.

2. The adjusting device's indicator rod is leaking.

Disassembling the lower limit stopper body to replace the oil seal, may be due to the oil seal being in stock, aging due to prolonged use, or exceeding the specified operating environment temperature.

Ordering

1. ZVB-L can only come with one Adjusting device. If there are special needs, each pair of outlets can be equipped with it. Users need to contact the salesperson to order separately.
2. For ZVB with an odd number of outlets, it is necessary to indicate the position of the unused oil outlet. If not specified, the outlet on the right position will be blocked.
3. If the ambient temperature of the distributor is greater than 80 °C, it must be indicated at the time of ordering in order to provide high-temperature oil seals.